

HYBRID CHIPPER

# THC 465



# Green performance in every respect. Economy, technology, quality.

**The mobile hybrid chipper of Terex Environmental Equipment is a world innovation – suitable for a variety of input materials ranging from high grade trunk wood to untreated rootstocks. These rootstocks traditionally have to be processed by a slow speed shredder, creating an oversize product which requires screening out and further reduction. The THC 465 high speed rotor, complete with sizing screen baskets, eliminates this oversize product.**

**A revolutionary concept and a future-proof investment that makes you independent of varying material qualities.**

The mobile hybrid chipper HC (HybridChipper<sup>®</sup>) is a complete system, available by standard with two drum rotors that can be changed within a few hours:

- ▶ With the heavy-duty rotor LogChipper<sup>®</sup> (LC) for processing trunk wood or iron-free wood residues from sawmills.
  - ▶ With the innovative rotor RootChipper<sup>®</sup> (RC) for processing root wood as well as all materials that have so far required an additional slow-speed machine plus a three-fraction screen.
  - ▶ High fuel efficiency due to an elaborate combination of knife technology, discharge, and direct drive mechanism with a high flywheel mass.
  - ▶ The screen baskets of 30 to 125 mm can be exchanged without any tool.
  - ▶ Self-explanatory and intuitive operator guidance.
-

# The Terex Environmental Equipment HybridChipper®

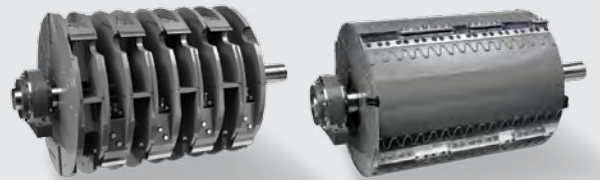
The complete all-rounder with trunk wood and root wood chipper.

## THC 465 overview



The feed device is available as short version (3.5 m) or long version (4.5 m). Just as needed.

Two machines in one: the LogChipper® and the RootChipper® can be interchanged within a few hours.



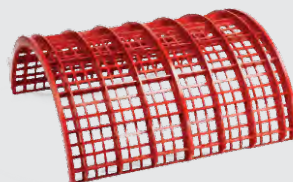
The material can be discharged via a slewable conveyor belt or a blower (only with LogChipper®).



Mobility enhances the value: the machine can be moved via a 3-axle rigid drawbar trailer, mounted on a truck, as semi-trailer, or crawler-based.



The live ring construction provides for an enormous increase in productivity on site. It can be turned up to 90° to both sides and is available for each undercarriage.



The screen baskets (from 30 to 125 mm) can be exchanged easily and quickly without any tools.

# The Terex Environmental Equipment LogChipper<sup>®</sup>

The high-efficiency machine for trunk wood up to 90 cm in diameter.

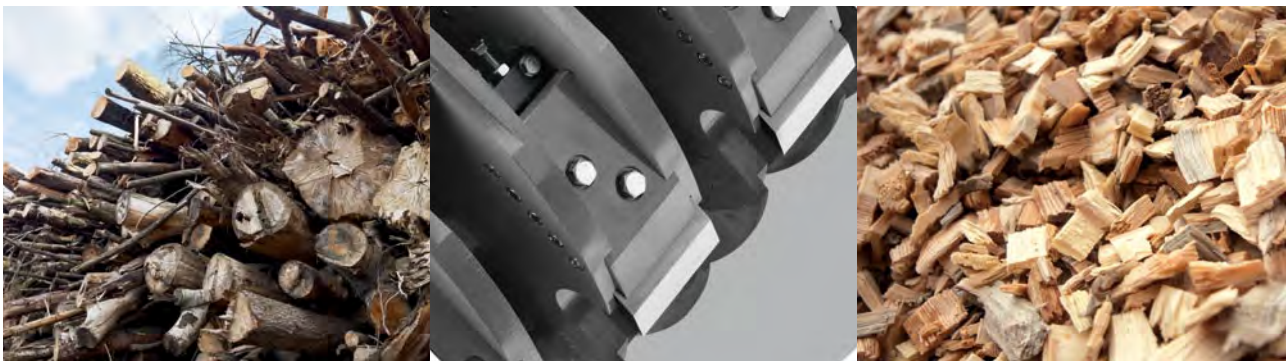
## THC 465 application profile:

**Where hardwood or softwood, logs and timber, bundled wood, eucalyptus, or iron-free wood residues from sawmills are to be chipped into smalls of predefined qualities and true to size quickly, economically and safely:**

- ▶ No fines and constant, classifiable quality
- ▶ Complete material utilization
- ▶ Guaranteed selling of smalls.

**The LogChipper<sup>®</sup> (trunk wood chipper) displays its leading-edge technology. Wherever it's employed.**

- ▶ The perfect matching of feeding and rotor guarantees the dimensional accuracy of the smalls; that's how quality is produced
- ▶ Up to 300 lcm (loose cubic meters) throughput per hour
- ▶ The direct drive mechanism and the discharge via a slewable conveyor belt ensure that each litre of fuel is used to its best
- ▶ Automatic detection of extraneous material
- ▶ High availability due to service-friendly design and bolted rotor construction, wear parts can be exchanged while assembled
- ▶ Can be exchanged with the Neuson Ecotec RootChipper<sup>®</sup> rotor within a few hours.



A top machine for highest quality of smalls and outstanding throughput when chipping trunk wood of up to 90 cm in diameter.

Readjustable, multiple-use knives and the automatic detection of extraneous material increase the availability of the machine and reduce service costs.

The quality and cleanness of the chips will become pivotal factors of success for biomass products. And last but not least they are the prerequisite for getting interesting prices for the material and the work.

---

# The Terex Environmental Equipment RootChipper®

The root wood chipper for inferior input material and forest residues.

## THC 465 application profile:

**Where root wood or untreated rootstocks, shrub cuttings or lop, soft trunk wood (up to 80 cm in diameter), bundled softwood (such as pine or spruce), or scrap wood with a low share of iron is to be chipped into ready-made, fragmented and non-splintering biomass quickly, economically and safely:**

- ▶ Secured value creation even with ever-decreasing input material quality
- ▶ Fragmented quality chips instead of splintered “shredder material”
- ▶ Saving of working steps compared with slow-speed machine plus three-fraction screen.

**The RootChipper® (root wood chipper) means an upgrade for each material, thus being a reliable value creator for each processor and supplier.**

- ▶ High availability of the machine due to simple and robust design of the rotor
- ▶ Reasonably priced disposable knives that can be changed within minutes
- ▶ Up to 250 lcm (loose cubic meters) throughput per hour
- ▶ Can be exchanged with the LogChipper® rotor within a few hours.



Upgrading rootstocks and forest residues and chipping it into biomass—this will guarantee the profit even with a decreasing quality of the input material.

High availability of the chipper due to excellent maintenance friendliness. The open access to the rotor makes daily inspection particularly easy. Everything can be seen at a glance.

Chipped, fragmented, and high-grade biomass through and through instead of splintered shredder material. This is small quality in demand without fines and overlengths.

---

# Flexible hybrid chipper or powerful material specialist?

Take your pick with Terex Environmental Equipment.

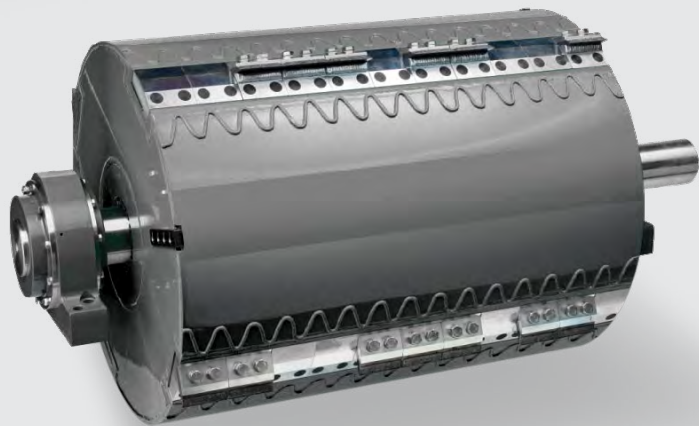
Always the same machine, but with customized interior:

**the rotor makes the difference**



The **LogChipper**® is a professional-grade trunk wood chipper for top quality and top performance.

The **RootChipper**® is a universally applicable root wood chipper that gets to the root of any decreasing quality of the input material... constantly producing smalls that are precisely chipped and that are not splintered: no fines, no overlengths.



## TECHNICAL DATA

	THC 465 LogChipper	THC 465 RootChipper
<b>Concept</b>	Drum-type chipper	
<b>Range of application</b>		
<b>Chipping of</b>	trunks of hardwood and softwood	roots as well as green waste and shrub cuttings
<b>Trunk diameter</b>	700 mm	850 mm
<b>Output</b>		
<b>Max. capacity roots, green waste and shrub cuttings</b>		up to 200 lcm up to 250 lcm
<b>Max. capacity trunk wood</b>	up to 250 lcm	up to 300 lcm
<b>Engine data</b>		
<b>Engine</b>	Deutz TCD 16.0 V8	
<b>Output</b>	653 hp / 480 kW	
<b>Emission standards</b>	Tier 4 Interim	
<b>Exhaust System</b>	SCR AdBlue, without particulate filter	
<b>Cooling</b>	fluid, reversible fan	
<b>Diesel tank (external)</b>	2 x 400 litres (trailer)	
<b>Electrical installation</b>	24 VDC	
<b>Chopping unit</b>		
<b>Rotor type</b>	steel discs bolted	drum welded
<b>Rotor diameter</b>	1,140 mm	1,140 mm
<b>Number of knives</b>	16	26
<b>Chipping rotor revolutions</b>	466 rpm	466 rpm
<b>Screen basket</b>	mesh size 30, 50, 65, 80, 125 mm	
<b>Coupling</b>		
<b>Drive type</b>	belt pulley clutch with hydr. belt tensioning	
<b>Power transmission</b>	via two 5-fold belts	
<b>Material feeding</b>		
<b>Chain belt 3.5 m length x width</b>	2,000 x 1,290 mm	
<b>With feeding flap</b>	3,680 x 1,290 mm	
<b>Feeding height max.</b>	900 mm	
<b>Feeding width max.</b>	1,200 mm	
<b>Feed conveyor</b>	chain belt of steel	
<b>Material discharge belt</b>		
<b>Length</b>	7,000 mm	
<b>Width</b>	750 mm	
<b>Discharge height</b> (at inclination 40° and trailer-mounted)	5,000mm	
<b>Weight</b>		
<b>Version with conveyor belt (only machine)</b>	21,000 kg	20,500 kg
<b>Dimensions</b>		
<b>Transport</b>	2,550 x 9,800 x 4,000 mm	
<b>Mobility</b>		
<b>Trailer</b>	3-axle central axle trailer	
<b>Gross Vehicle Weight</b>	28,000 kg	
<b>Options</b>		
Mobility: truck-mounted, trailer with turntable, semi-trailer, crawler track   hydraulics: crane pump for truck version   central lubrication   hard-faced tools   quick change knife system   chain belt 4.5m   blower   working headlights   bio hydraulic oil   special paint   more options on request		